



**ABBYY**

# ABBYY® Timeline 6.0

Recorder Log Viewer Guide

## ABBYY® Timeline 6.0 - Recorder Log Viewer Guide

© 2023 ABBYY. All rights reserved.

ABBYY® Timeline 6.0 © 2023 ABBYY Development Inc.

ABBYY is either registered trademark or trademark of ABBYY Software Ltd. in the United States and/or other countries.

All other product names, trademarks and registered trademarks are the property of their respective owners.

Information in this document is subject to change without notice and does not bear any commitment on the part of ABBYY.

The software described in this document is supplied under a license agreement. The software may only be used or copied in strict accordance with the terms of the agreement. It is a breach of the United States copyright law and international laws to copy the software onto any medium unless specifically allowed in the license agreement or nondisclosure agreements.

No part of this document may be reproduced or transmitted in any form or by any means, electronic or other, for any purpose, without the express written permission of ABBYY.

## Table of Contents

<b>Overview</b> .....	<b>4</b>
<b>Installation</b> .....	<b>5</b>
<b>Usage</b> .....	<b>6</b>
Input .....	6
Main Steps .....	7
Workspace .....	7
<b>Technical Support</b> .....	<b>10</b>

# Overview

Recorder Log Viewer allows you to view the logs recorded by Recorder installed in **Standalone** mode. This guide shows how to use Recorder Log Viewer.

Recorder installed in **Standalone** mode is useful for trial purposes. Its limitations affect the recorded logs:

- Recorded logs are stored on users' computers and are not sent to Recording Service for processing, so there are no forms in these logs. If you plan to upload logs to Timeline for trial purposes, first open your logs in the Recorder Log Viewer utility. As a result, the forms will be detected automatically and the *Forms* folder inside your logs will be created. Next, to upload the processed logs to Timeline, follow the instructions in the Timeline guide, see 'Projects, Tools, and Data Analysis -> Task Mining -> Data Upload -> Logs upload without Recording Service'.
- Important.** Forms are supported in Recorder Log Viewer 6.0 and later.
- Only passwords are encrypted in text logs, other text data are not encrypted, and data in screenshots aren't blurred.

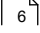
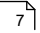
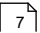
# Installation

Recorder Log Viewer tool is installed with ABBYY Recorder set to the **Standalone** mode. For detailed information on installing and using Recorder, see [ABBYY Timeline Deployment Guide on Windows systems](#).

# Usage

This section describes input and scenario for using Recorder Log Viewer.

Chapter contents

- [Input](#)   
Recorder Log Viewer expects Recorder logs as input. Here you will find information about which logs the tool supports to open.
- [Main Steps](#)   
This page will guide you through the main steps of working with Recorder Log Viewer.
- [Workspace](#)   
Here you will find detailed information about components you can see in Recorder Log Viewer workspace.

## Input

Recorder Log Viewer expects Recorder logs as input.

- By default, logs are stored in the **%AppData%\Roaming\ABBYY\Recorder\Recorded** folder.
- Recorder records user activity to a folder with a name that contains a timestamp and session number: **YYYYMMDD-HH24:MI:SS-N**.  
For example, 20230127-1735-0.
- In Recorder installed in the **Standalone** mode log folder may contain the following subfolders:
  - **Screenshots** - it appears during log recording and stores screenshots.
  - **Commands** - it appears after the recording stopped.
  - **Backup** and **Forms** - they appear after the log is opened in Recorder Log Viewer.
- Logs recorded during a new recording session are stored in a separate folder.

# Main Steps

Recorder Log Viewer can typically be used in the following scenario:

1. Install Recorder in the **Standalone** mode.  
For detailed instructions on installing and using Recorder, see [ABBYY Timeline Deployment Guide on Windows systems](#).
2. Run Recorder and start recording.  
After the recording stopped, the logs are available to view.
3. Click **Start > Run > ABBYY Recorder > Log Viewer** to open Recorder Log Viewer.
4. Click **Open** and select a local or network folder with logs.  
**Note.** If you try to open an invalid log folder, you will see an error:  
*An error occurred: Folder <selected folder> contains no valid logs or no screenshots.*  
For detailed information about the input, see the [Input](#)<sup>6</sup> section.
5. Selected log will be open.  
For detailed information see the [Workspace](#)<sup>7</sup> section.

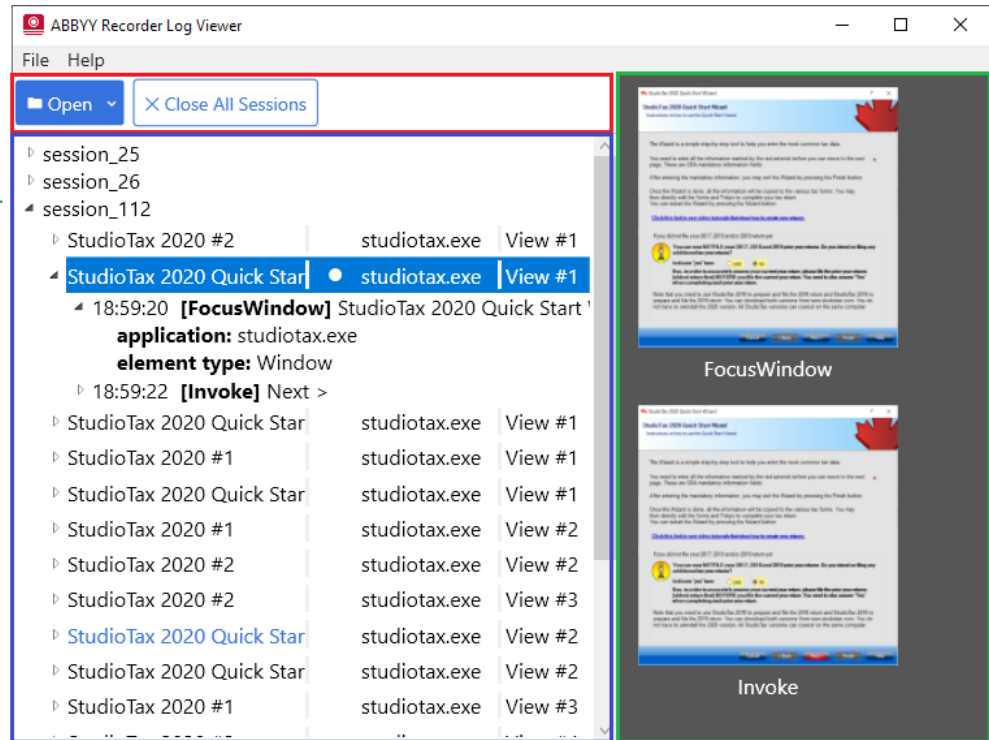
# Workspace

The Recorder Log Viewer workspace has three main components that are immediately visible:

1. **Command Bar** where you access all program functions:
  - a. To open a log, click **Open**.  
When you open a log, its contents are displayed in the **Session Explorer**. You can open multiple logs and navigate between them using the **Session Explorer**.
  - b. To open one of the previously viewed logs, click the arrow on the **Open** button.  
The list shows you 5 recent logs that you've opened. You can open a log by clicking on its entry. If the log you want isn't on the recent logs list, click **Open** and browse to find the log.
  - c. To close all open logs, click **Close All Sessions** button.
2. **Screenshot Viewer** to see the screenshots of the recorded forms.
3. **Session Explorer** to navigate recording sessions of the opened logs.  
You can find a detailed description of the **Session Explorer** for different versions of the Recorder Log Viewer [below](#)<sup>8</sup>.

The picture below shows the workspace of Recorder Log Viewer 6.0

- **Command Bar**
- **Session Explorer**
- **Screenshot Viewer**



### Session Explorer in Recorder Log Viewer 6.0 and later

It shows each log as a separate recording session. Each recording session is represented by its node. A node contains a list of recorded form views. Each form view is a separate iteration (session) of the user's actions in an application before moving to another application.

1. Select a form view and you will see screenshots illustrating certain user actions.
2. Expand a form view to see the user actions recorded in this form.

A user action consists of the following entries:

a. **application**

Contains the path to the application EXE file or website URL where the user acted.

b. **element type**

Optional element. Contains the type of item associated with the form. For example, the Window, Button.

c. **selected menu**

Optional element. Contains the menu selected by a user in the application.



d. **value / new value / old value**

Optional element. May contain encrypted copied or pasted text, URL if the event happened in the browser, and coordinates of the mouse click in the following format: x, y.

**new value** and/or **old value** may appear if an element had a value set and a user changed it to another one.

e. **key sequence**

Optional element. Contains the key a user pressed.

3. Double-click a form view to open it in the **Form instance view** window. You will see recorded user actions and screenshots.
4. To close all open logs, click **Close All Sessions**.

### Session Explorer in Recorder Log Viewer 5.3 and earlier

It shows all recorded events in a session. For each event, you can see the following entries:

1. **application**

Contains the path to the application EXE file or website URL where the user performed the action.

2. **element type**

Optional element. Contains the type of item associated with the event. For example, the Window, Button.

3. **value**

Optional element. May contain encrypted copied or pasted text, URL if the event happened in the browser, coordinates of the mouse click in the following format: x, y.

To close one of the open logs, select the session and press **Delete** key.

# Technical Support

Should you have any questions regarding the use of ABBYY Timeline, please submit a request to the ABBYY technical support service on this [page](#).